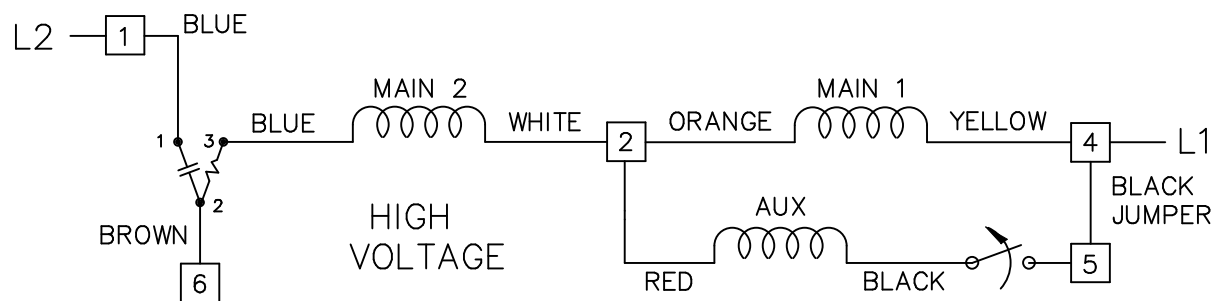
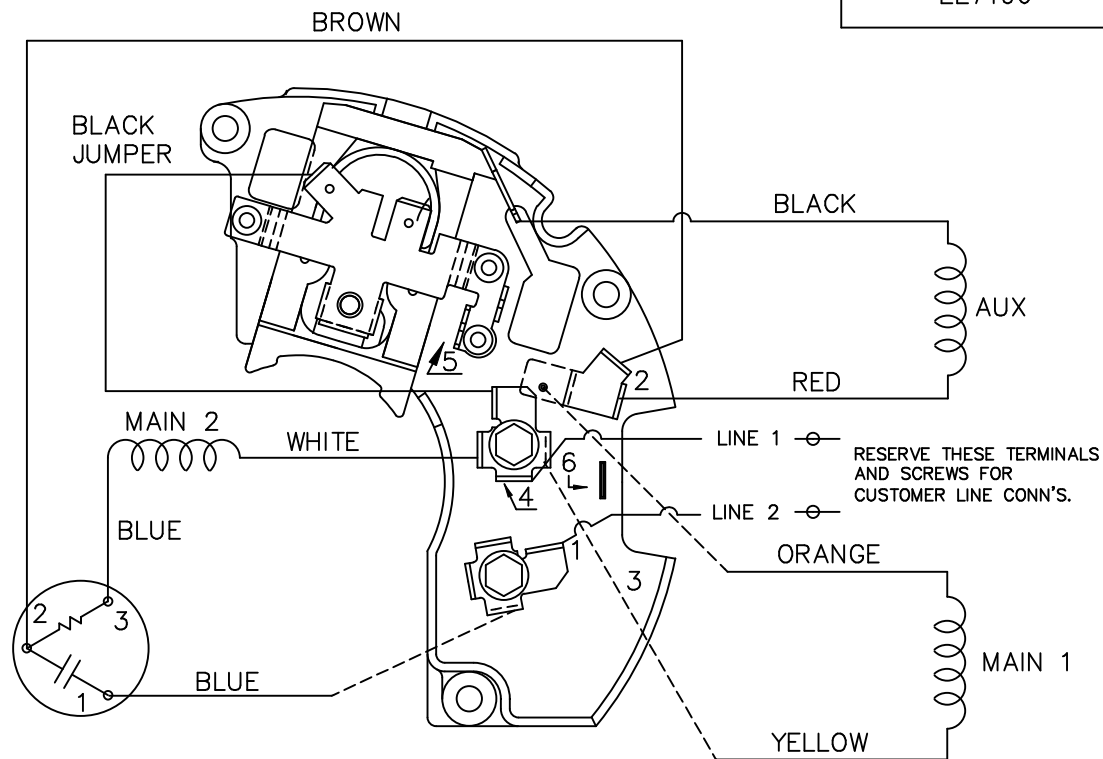



DUAL VOLTAGE – SPLIT PHASE
REVERSIBLE ON TERM BOARD
WITH OVERLOAD PROTECTION



FOR HIGH VOLTAGE
CONNECT BROWN TERM 2 TO TERM 6.
CONNECT WHITE TERM 4 TO TERM 2.

TO REVERSE ROTATION EITHER
VOLTAGE INTERCHANGE RED
LEAD WITH BLACK LEAD

				TOLERANCES UNLESS SPECIFIED			DRAWN ML 01-28-1988			
				DEC.	INCHES		CHK	GK	01-05-1988	
4	REDRAWN IN AUTOCAD	TAT 08-02-2004	ML	.X	±.1	TITLE CONNECTION DIAGRAM 48 FR. – DUAL VOLTAGE REVERSIBLE	APPD	DRN	03-15-1988	SCALE 1=1
3	REVISED LINE 2 LOCATION CN 6427	RM 01-28-1991		.XX	±.02					REF
2	ADDED CUSTOMER CONNECTION NOTE CN 6011	BW 08-03-1989		.XXX	±.005					FMF
1	NEW DRAWING	ML 08-19-1988		.XXXX	±.0005					PREV
NO.	REVISION	BY & DATE	CHK	ANG	±7'30"	FINISH				
THIS DRAWING IN DESIGN AND DETAIL IS OUR PROPERTY AND MUST NOT BE USED EXCEPT IN CONNECTION WITH OUR WORK ALL RIGHTS OF DESIGN AND INVENTION ARE RESERVED THIS IS AN ELECTRONICALLY GENERATED DOCUMENT – DO NOT SCALE THIS PRINT				RFP		CAD FILE ee7196	SIZE A	DRAWING NO. EE7196	PAGE OF	REV. 4
				DIST	WP					